

Are you...

# Anne Arundel County Renter

## Possibly Facing Eviction

### IF SO

Here are some legal and self-help resources that can help

#### MARYLAND COURTS SELF-HELP CENTER

[mdcourts.gov/selfhelp](http://mdcourts.gov/selfhelp)

410-260-1392

Monday - Friday, 8:30 a.m. - 8:00 p.m.

#### COMMUNITY LEGAL SERVICES, INC.

[www.clspgc.org](http://www.clspgc.org)

240-391-6370



#### MARYLAND LEGAL AID

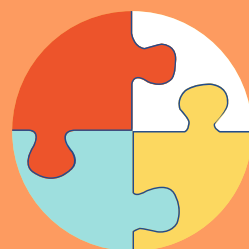
[www.mdlab.org](http://www.mdlab.org)

410-972-2700

#### ANNE ARUNDEL COUNTY CONFLICT RESOLUTION CENTER

[www.aacrc.info](http://www.aacrc.info)

410-266-9033



#### DISTRICT COURT SELF-HELP RESOURCE CENTERS

Walk-in assistance available at the courthouse

Monday - Friday, 8:30 a.m. - 4:30 p.m.

7500 Ritchie Highway, 2nd Floor

Glen Burnie, MD 21061



#### FAIR HOUSING ACTION CENTER OF MARYLAND TENANT AND FAIR HOUSING INTAKE LINE

To complete the intake form, visit

<https://www.fairhousingmd.org/housing-inquiry-form/>

443-447-7336

Tuesday - Wednesday, 10:00 a.m. - 2:00 p.m.



While there is now a federal moratorium on evictions for some cases through December 31, 2020, **RENTERS** still owe payments to their landlords.



#### IF YOU CANNOT PAY YOUR RENT AND MEET THE CDC CRITERIA

Download **AND** complete the form **AND** present it to your landlord with the required documentation

<https://www.us-hc.com/wp-content/uploads/2020/09/Declaration-Form.pdf>

#### TO GET HELP PAYING YOUR RENT, VISIT

<https://acdsinc.org/housing-resources/renters/acds-eviction-prevention-program/>

OR

call 410-222-7600, dial 2

to see if you qualify for the County's Eviction Prevention Program.



If you are sued for failure to pay rent, **DO NOT** ignore the hearing date!

You **MUST** attend the hearing and present the form referenced above to the Judge on the day of your court hearing.



ANNE ARUNDEL COUNTY  
MARYLAND